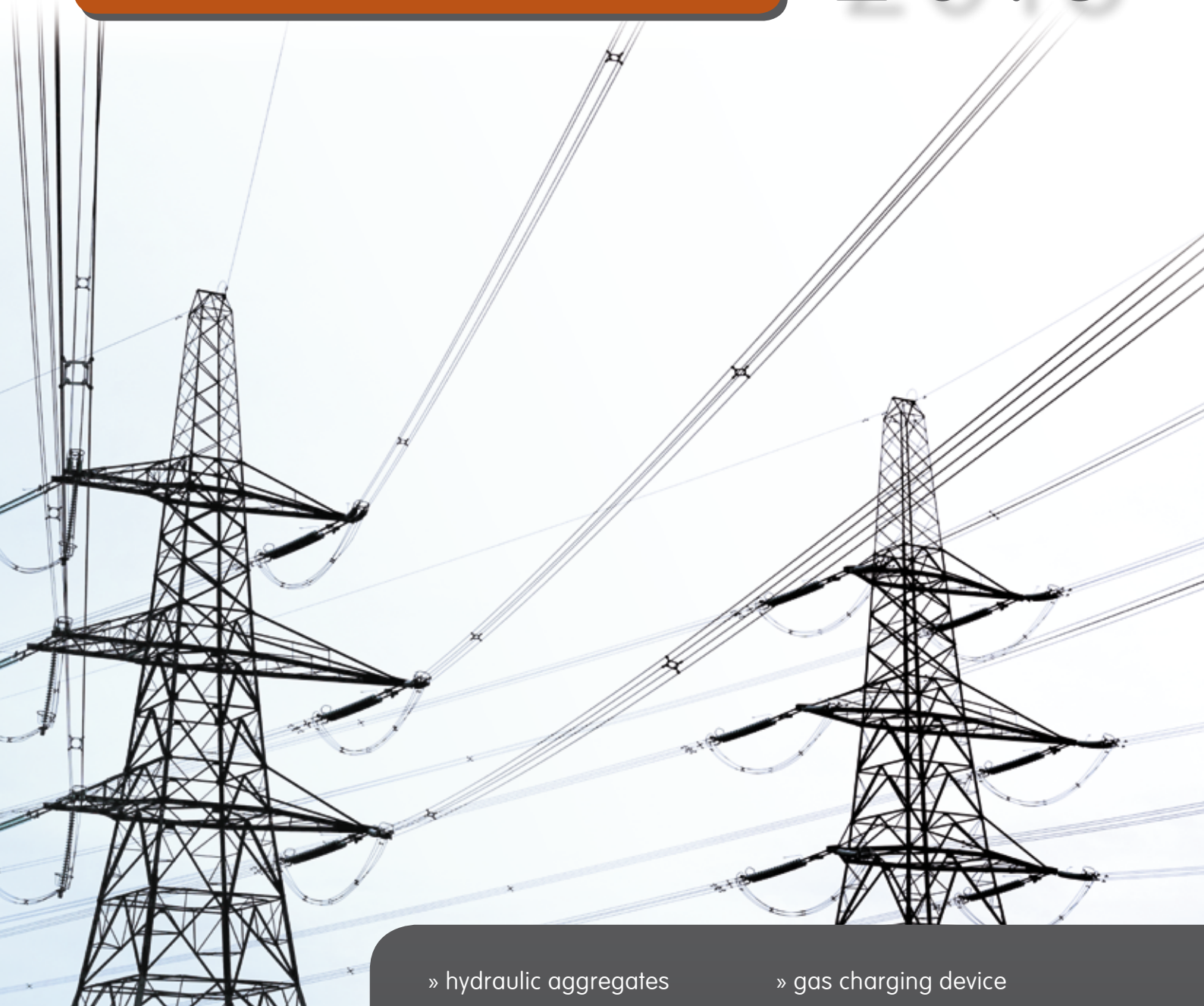


PRODUCT OVERVIEW

2018



- » hydraulic aggregates
- » safety cutting units
- » hydraulic cuttingheads
- » hydraulic crimpingheads
- » dies
- » pipe jacking tools
- » gas charging device
- » hydraulic hoes
- » tools for meter installation
- » mechanic hand tools
- » tools for street lighting
- » insulated tools



VISION MEETS EXPERIENCE IN CABLE TECHNOLOGY

The IPR revises actually the entire hydraulic tool palette.

The target is to reduce significantly the weight of each tool,
to use it more efficiently and to increase the safety.

ipr =

developer
manufacturer
MADE IN GERMANY
100% quality, German craftsmanship
protection, ergonomics, safety
performance and effectiveness
light weight
reliable tools
reliable Team
optimum consulting
competence
master craftsman leaded workshop

Experience: ipr WERKZEUGE (TOOLS) can revert on decades of experience in development, manufacture and distribution of industrial tools and accessories from the disciplines of electrical power supply and the general tool technology. Especially in the range of hydraulic cutting and crimping tools we have outstanding know-how.

Vision: ipr WERKZEUGE (TOOLS) is first contact for innovative, new and individual tools. We are always one step ahead. Our tools are modern, are in trend, stands for power, quality and ergonomic, for safety, efficiency and reliability! Our hydraulic-know-how leads interbranch to new fields of developments.

Team: The optimal mix of young and old guaranties a stable creative success-oriented field.

Evolution: ipr evolves the whole hydraulic tool range. Our target: a significant reduction of essential tools and weight of each tool.

Plug and Play: Our cooperations with several research institutes allows technological progress: in our next generation of tools we use Bluetooth- and RFID Technology – for your comfort and your safety!

Current: permanent contact as well as the exchange with industrial injuries organization and VDE allows us access to latest Information and the current standards.

Partnership: Experience for years, a permanent exchange with our costumers and the cooperation with specialists allows us to place permanent innovation on the market. In partnership we transform with our costumers desires and requirements in innovation.

EXPERIENCE AND COMPETENCE, WHICH YOU CAN USE!

Philosophy: ipr stands for honesty, fairness and reliability. We are friendly, customer oriented and faithful. A harmonic team with fun at work and with pleasure with you, our customer.



Company



User

CONTENT

hydraulic aggregates	6
hydraulic cuttingheads	10
safety cutting unit	16
safety handling	20
fingersafe	21
hydraulic crimpingheads	22
dies	30
cases and bags	34
pipe jacking tool	36
gas charging device	37
conus anchor clamp hoisting device	38
hydraulic hoes	41
service workshop	42
hand-battery-tools	46
tools for meter installation	52
mechanic hand toolse	54
tools for street lighting	57
insulated tools	58

INNOVATION IS OUR PASSION!

Please send your repairs to:
i
pr GmbH
Austr. 101
D-96465 Neustadt bei Coburg

Our products you can find here:
[www.i
pr-tools.de](http://www.i
pr-tools.de)

Questions can be send to:
[international@i
pr-tools.de](mailto:international@i
pr-tools.de)

By phone you can reach us:
+49 9568 89690 - 0

THE LIGHTEST TOOL IN CABLE ASSEMBLY

DEVELOPMENT: SUPER LIGHT ipr-SERIES

OPTIMUM: Our target is it to optimize assembly works of energy suppliers and their installation companies. We say: Less is more! Less weight, less necessary tools, less costs. For that we increase ergonomics and above all safety.

EFFICIENCY: The old 85s cutting head weights 7,4 kg. Our new 10 mm bigger 95s ipr95hS weighs only 5,1 kg. By the weight reduction you need less tools, because you can use the lighter tools also for smaller crosssections. This saves investment costs and space in the vehicle. Until now two fitters had to handle the 63 kg heavy 100t crimping head, now only one fitter is necessary to handle the new 20 kg light 100t crimping head ipr990hP. Through weight reduction and increase the power of all tools the fitter works more efficient. An exponentially increase of efficiency for you.

Attention VPE-insulated cable: In the last years various cable were developed. Especially in medium and high voltage VPE-insulated cables are used. By cutting this cabletypes arises enormous lateral forces which exceed the normal necessary cutting force. Please consider at cut of 3 x single-wire conductors.

TECHNOLOGY AND DESIGN ON A HIGH LEVEL



INNOVATIV and MODERN: The AIR-SPRING-TECHNOLOGY is another innovativ step towards modern tools. New processing procedures enables use of new lighter materials. Over that we have given our tools a unique design. Test our new super light tools. You will see that it is not only light, it is powerful and reliable, it fits comfortable in your hand and it just looks great. So it is fun to work!

WORK PROTECTION

FINGERSAFE: ipr-TOOLS against injuries, which crumple or cutts your fingers. For that we developed FINGERSAFE.

THE ROPE CUTTER ipr45hS



THE POWERFUL ipr130hS-power



THE SUPER LIGHT ipr150hP



THE WORLDWIDE LIGHTEST

**THE SUPER LIGHT
ipr50hS**



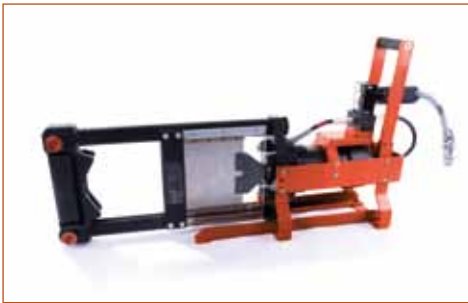
**THE SUPER LIGHT
ipr95hS**



**THE SUPER LIGHT
ipr120hS**



**THE SEA CABLE CUTTER
ipr210hS**



**THE TUBE PRESS
ipr65hRPW**



OPTIMAL WITH OUR **HYDRAULIKAGGREGAT UNI-FUTURE-II®**.

WITH ONE DRIVE, ONE CUTTING- AND ONE CRIMPINGHEAD YOU CAN HANDLE 90% OF YOUR WORK. OUR UNI FUTURE IS A GREAT SUCCESS AND CHANGES SUSTAINABLE THE TOOL BUSINESS.

**THE SUPER LIGHT
ipr300hP**



**THE SUPER LIGHT
ipr550hP**



**THE SUPER LIGHT
ipr990hP**



TOOLS AT CABLE ASSEMBLY.

HYDRAULIC AGGREGATE

ipr850HA-UNI-FUTURE-II

UNI FUTURE-II



TYPES:

- DA** - Standard version with pressure absorber
- SCU** - Drive for safety cutting units with manometer and earthing connection
- RPW** - Drive for pipe pressing tools,

SPECIALS:

- suitable for all usual hydraulic tools
- automatic detection of pressure requirements after receiving the necessary working pressure
- turn-off at idling
- inching function
- battery- and mains operation
- lithium-ion-battery with protection of depth discharge, overcharge, short circuit, undervoltage, overvoltage
- UNI FUTURE® is a registered brand

TECHNICAL SPECIFICATIONS

Power:	max. 1200 W
Pressure, continuous adjustment:	max. 850 bar
Power supply:	230 V, 50 Hz
Accumulator, Li-Ionen-battery:	4,8 Ah; 28,7 V
Usable oil volume:	700 ml
Delivery rate:	max. 1 l/min
Dimensions with handle:	222 x 168 x 269 mm
Weight:	6,9 kg



OPTIMAL: OUR **HYDRAULIC AGGREGAT UNI FUTURE®**. WITH ONE DRIVE, ONE CUTTING- AND ONE CRIMPINGHEAD YOU CAN HANDLE 90% OF YOUR WORK.

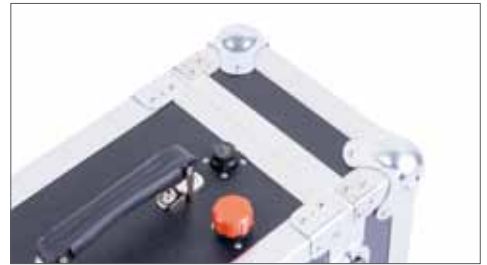
Very popular at the users.

FOR MODERN SERVICE TECHNICIAN

HYDRAULIC AGGREGATE

ipr850HA cube1400-easy

cube



TYPES:

- DA - Standard version with pressure absorber
- RPW - Drive for pipe press tools

SPECIALS:

- suitable for all usual hydraulic tools
- automatic detection of pressure requirements after receiving the necessary working pressure
- turn-off at idling
- inching function
- battery- and mains operation
- lithium-ionen-battery with protection of depth discharge, overcharge, short circuit, undervoltage, overvoltage
- oil level indicator
- automatic tank ventilation
- extraneous fuel level

TECHNICAL SPECIFICATIONS

Power:	max. 1200 W
Pressure, continuous adjustment:	max. 850 bar
Power supply:	230 V, 50 Hz
Accumulator, Li-Ionen-battery:	4,8 Ah; 28,7 V
Usable oil volume:	1,4 Liter
Delivery rate:	max. 0,7 l/min
Dimensions with handle:	342 x 212 x 277 mm
Weight:	13,0 kg



HYDRAULIC AGGREGATE

ipr-cube-ED100-700



cube



BESONDERHEITEN:

- usable for all hydraulic tools
- automatic detection of pressure requirements
- after receiving the necessary working pressure
- turn-off at idling
- inching function
- mains operation
- powerful mains adapter with protection of overvoltage -25 °C - 70 °C
- sensor controlled ventilator
- usable for industrial applications
- usable for cable recycling

TECHNISCHE DATEN

Pressure, continuous adjustment:	max. 850 bar
Power supply:	110 - 230 VAC, 50 - 60 Hz
Usable oil volume:	700 ml
Delivery rate:	max. 1 l/min
Dimensions with handle:	410 x 260 x 305 mm
Weight:	14 kg



THE AGGREGATE IS SHIELDED WITH AARONIA MESH TISSUE.

ED100 = ON-TIME 100%.

ULTRA LIGHT

HYDRAULIC FEET PUMP ipr700pes



SUITABLE



- a drive for hydraulic cuttingheads
- a drive for hydraulic crimpingheads
- a drive for safety cutting units

TECHNICAL SPECIFICATIONS

Weights only:	4,2 kg
Tank capacity:	0,24 - 0,5 l
Delivery rate per hub:	2,2 cm ³
Max. working pressure:	700 bar

- tank refillable
- outside adjustable pressure control valve.
- integrated manometer up to 1000 bar
- connection for earthing kit

FEATURES

- easy handling
- chic design
- comfortable work
- low maintenance
- high safety

ALTERNATIVE DRIVES



HYDRAULIC CUTTINGHEAD ipr50/45hS



SPECIFICS

cutting force at 850 bar: 81,8 kN
AIR-SPRING-TECHNOLOGY
lightweight and compact design
lever locking bolt
folding cuttinghead with knife guide
special cutting edge geometry to high performance cutting
integrated oil filter
quick release nipple
dust protection cap
ergonomic handling
fast and efficient work

ipr50hS-light



article number: 150212
weight: 3,4 kg
dimensions: 104 x 50 x 307 mm
shaft guide of aluminum
max. cable diameter: 50 mm
suitable for cable types: Al, Cu
cuts thin steel reinforcements and straps

ipr45hS-steel



article number: 150210
weight: 3,3 kg
dimensions: 99 x 54 x 304 mm
shaft guide of steel
max. cable/rope diameter: 45 mm
suitable for cable types: Al, Cu, Al/St
optimized for overhead lines

FINGERSAFE



ipr50hS-light-fingersafe



article number: 150181
weight: 3,7 kg
dimensions: 104 x 50 x 320 mm
shaft guide of aluminum
max. cable diameter: 50 mm
cuts thin steel reinforcements and straps

work protection model

ipr45hS-steel-fingersafe



article number: 150291
weight: 3,6 kg
dimensions: 99 x 54 x 304 mm
shaft guide of steel
max. cable/rope diameter 45 mm
suitable for cable types: Al, Cu, Al/St
optimized for overhead lines

work protection model

ACCESSORIES



ball head handle
lever locking bolt
eye bolt
case
standard handle
function handle
cutting blade
counter blade
knife set
pivoting connection for nipple

HYDRAULIC CUTTINGHEAD ipr95hS



SPECIFICS

cutting force at 850 bar: 81,8 kN
AIR-SPRING-TECHNOLOGY
lightweight and compact design
lever lock
folding cuttinghead with knife guide
special cutting edge geometry to high performance cutting
integrated oil filter
quick release nipple
dust protection cap
ergonomic handling
fast and efficient working

ipr95hS-light



article number: 150395
weight: 5,1 kg
dimensions: 150 x 59 x 445 mm
shaft guide of aluminum
max. cable diameter: 95 mm
suitable for cable types: Al, Cu
cuts thin steel reinforcements and straps

ipr95hS-steel



article number: 150394
weight: 5,3 kg
dimensions: 150 x 59 x 445 mm
shaft guide of steel
max. cable diameter: 95 mm
suitable for cable types: Al, Cu
cuts steel reinforcements up to 2mm diameter

FINGERSAFE



ipr95hS-light-fingersafe



article number: 150182
weight: 6,2 kg
dimensions: 150 x 59 x 468 mm
shaft guide of aluminum
max. cable diameter: 95 mm
cuts thin steel reinforcements and straps

work protection model

ipr95hS-steel-fingersafe



article number: 150183
weight: 6,8 kg
dimensions: 150 x 59 x 468 mm
shaft guide of steel
max. cable/rope diameter: 95 mm
cuts steel reinforcements up to 2mm diameter

work protection model

ACCESSORIES



ball head handle
eye bolt
case
standard handle
function handle
cutting blade
counter blade
knife set
pivoting connection for nipple

HYDRAULIC CUTTINGHEAD ipr120hS



SPECIFICS

cutting force at 850 bar: 81,8 kN
AIR-SPRING-TECHNOLOGY
lightweight and compact design
lever lock
folding cuttinghead with knife guide
special cutting edge geometry to high performance cutting
integrated oil filter
quick release nipple
dust protection cap
ergonomic handling
fast and efficient work

ipr120hS-light



article number: 150215
weight: 5,9 kg
dimensions: 174 x 59 x 493 mm
shaft guide of aluminum

cuts thin steel reinforcements and straps

ipr120hS-steel



article number: 150216
weight: 6,0 kg
dimensions: 174 x 59 x 493 mm
shaft guide of steel

cuts steel reinforcements up to 2mm diameter

ipr120hS-light-fingersafe



article number: 150184
weight: 7,8 kg
dimensions: 174 x 59 x 543 mm
shaft guide of aluminum

cuts thin steel reinforcements and straps

work protection model.

ipr120hS-steel-fingersafe



article number: 150185
weight: 7,9 kg
dimensions: 174 x 59 x 543 mm
shaft guide of steel

cuts steel reinforcements up to 2mm diameter

work protection model.

FINGERSAFE



ACCESSORIES



ball head handle
eye bolt
case
standard handle
function handle
cutting blade
counter blade
knife set
pivoting connection for nipple

STRONG, SAFE AND FUTURE-ORIENTED

ipr130hS-power

AIR
SPRING
TECHNOLOGY

You Tube



THE POWERFUL ipr130hS-power



TECHNICAL SPECIFICATIONS:

weight:	14,9 kg
cutting force at 850 bar:	153 kN = 15,7 t
max. cable diameter:	130 mm
suitable for cable types:	Al, Cu
dimensions:	216 x 165 x 597 mm

article number: 150423

AIR-SPRING-TECHNOLOGY

lightweight and compact design
lever locking bolt
folding cuttinghead with knife guide
special cutting edge geometry to high performance cutting
integrated oil filter
fingersave
quick release nipple
dust protection cap
ergonomic handling
fast and efficient work

HYDRAULIC SAFETY CUTTINGHEAD WITH POWER

This cuttinghead has cut in our performance test also bridge ropes. Cable with steelreinforcements up to 4 mm are a breeze. Depending on cable construction you need different knives .

Rescue equipment (left) in comparison with cable optimized ipr TOOLS (right):



article number: 150423

FINGERSAFE



CUTS QUICKLY AND SAFELY

iPr210hS-single



SINGLE KNIFE CUTTER iPr210hS-single



TECHNICAL SPECIFICATIONS

weight:	70,0 kg
cutting force at 850 bar:	736 kN = 75 t
max. cable diameter:	210 mm
suitable for cable types:	sea cable
dimensions:	340 x 150 x 925 mm

article number: 150287

CUTTINGHEAD FOR STEEL REINFORCEMENT SEA CABLE

FINGERSAFE



ACCESSORIES

holder
hydraulic aggregate
feet switch
cutting blade

ACCESSORIES HYDRAULIC CUTTINGHEADS

KNIFES

STANDARD HANDLE



Ergonomic justified the tools is good to handle. Also carrying the tool with your hand in the knife is prevent and thereby the risk of injuries.

BALL HEAD HANDLE



Improvement of work protection. The knife will be swing out at the ball button. Hand can not injured by knife.

FUNCTION HANDLE



To control the hydraulic aggregate ate the tool.

EYEBOLT

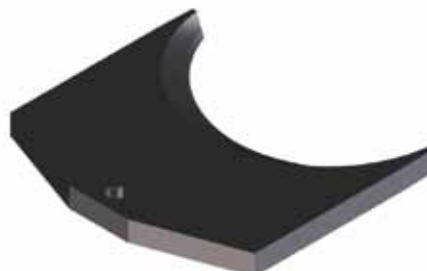


For mounting the tool

PIVOTING CONNECTION



for nipple, 360° rotatable,
so the hose is flexible





SAFETY CUTTING UNITS

Safety cutting systems are designed to protect the users against the influence of dangerous bodily flows and an electrical arc in the event of a certain use of cable cutters.

The professional association says in the BGI845 the following:

„Before any start of work on cable installations the voltage-free condition according to § 6 section 2 of the Accident prevention regulation „electrical equipment and resources“ must be ensured for the duration of the work. Because cables, especially buried cable, the determination of the voltage-free working is not always possible, a replacement measure for determining the voltage-free by separating the cables with special cable cutters in conjunction with a check at the switch-off point, e.g. a request at the network-leading site.“

Further information can be taken in the standard EN 50 340 (VDE 0682 part 661).

„Safety cutting systems belong to the group of equipment and equipment for working under voltage. This includes, for example, insulating tools, insulating personal protective equipment, actuating and grounding rods. All of these parts must be checked on a regular basis, but also before each use on the external identifiable damage and defects.“



Maintenance intervals of the safety cutting systems result from the provision for hydraulic high pressure hoses. Every 6 – 24 months have to be proofed and every 2 – 6 years have to be changed (see page 44).

ipr safety cutting systems are exclusively with the professional association approved safety hose for the usage up to 60 kV in according to GS-ET40 delivered. This allows you to choose between currently 11 cutting heads, between the drives foot pump or hydraulic unit and between the transport containers bag or suitcase. You can combine on your choice. Just compile your safety cutting system individually together.



**PROTECT YOURSELF AND YOUR COLLEAGUES
FROM AVERTABLE DANGERS!**



SAFE WITH POWER!

SAFETY CUTTING UNIT ipr-SCU-DA/pes-130



TECHNISCHE DATEN

Suitable for nominal voltages:	up to 110.000 V ⁽¹⁾
Length of hydraulic hose:	10 m
Length of remote control:	3 m
Suitable for cable types:	Al, Cu
Weight depending on the cutting head	from ca. 18 kg
Working temperature:	from -20 bis +40 °C
Oil:	HF-E 15
Cutting force:	153 kN = 15,7 t

⁽¹⁾ For motor-powered cable cutting machines for use at cables with nominal voltages over 30kV up to 60kV (maximum permissible normal voltage over 36kV up to 72,5kV). And at single-conductor cables with nominal voltage up to 110kV (maximum permissible normal voltage up to 123kV).

SHIPMENT

- hydraulic aggregate SCU or feet pump with manometer and earthing connection
- hydraulic hose
- charging cable
- remote control
- handle bag or case
- operation manual
- cutting head

ATTRIBUTES

- the cutting head is permanently fixed with the hose
- the hydraulic system is filled with delectric oil
- the earthing cable will be fixed at the pump via winged screw
- a battery or mains operation possible

SUITCASE

- Heavy duty wheels-easy to maniostrar
- Integrated waterproof lock
- Vertical storage area + carry included
- Large, stainless metal closing
- Tightness IP54: protection against dust deposits and all-sided pointed water



HIGHLY EFFICIENT !

SAFETY CUTTING UNIT ipr-SCU-DA-50/95/120



TECHNICAL SPECIFICATIONS

Suitable for nominal voltages:	up to 110.000 V ⁽¹⁾
Length of hydraulic hose:	10 m
Length of remote control:	3 m
Suitable for cable types:	Al, Cu
Weight depending on the cutting head	up to 14,0 kg
Working temperature:	from -20 to +40 °C
Oil:	HF-E 15
Cutting force:	68 kN = 6,9 t

⁽¹⁾ For motor-powered cable cutting machines for use at cables with nominal voltages over 30kV up to 60kV (maximum permissible normal voltage over 36kV up to 72,5kV). And at single-conductor cables with nominal voltage up to 110kV (maximum permissible normal voltage up to 123kV).

SHIPMENT

- hydraulic aggregate SCU with manometer and earthing connection
- hydraulic hose
- charging cable
- remote control
- handle bag or case
- operation manual
- cutting head

CHARACTERISTICS

- the cutting head is permanently fixed with the hose
- the hydraulic system is filled with deelectric oil
- the earthing cable will be fixed at the pump via winged screw
- a battery or mains operation possible

INCLUSIVE



Very light waterresistant bag with optimal apportionment of the inside space.

Optional also with case.



FOR THE RARE USAGE

SAFETY CUTTING UNIT ipr-SCU-pes-50/95/120



TECHNICAL SPECIFICATIONS

Suitable for nominal voltages:	up to 30.000 V
Hydraulic hose length:	10 m
Suitable for cable types:	Al, Cu
Weight depending on the cutting head	from 7,0 kg
Usage temperature:	from -20 to +40 °C
Brand:	HF-E 15
Cutting force:	68 kN = 6,9 t

SHIPMENT

- feet pump incl. manometer and earthing connection
- high pressure hydraulic hose
- handle bag or case
- operation manual
- cuttinghead

CHARACTERISTICS

- the cutting head is fixed with the hose
- the hydraulic system is filled with deelectric oil
- the earthing cable will be fixed at the pump via a winged screw

INCLUSIVE



Very solid case with edge protection and optimal apportionment of the inside space. Optional also available with bag and earthing rod.

Safety cutting units have to be checked regularly according to industrial injuries organisation. The test cycle is determined by the hydraulic hose. In addition the test cycle of the manufacturer is to be concluded.

Please use our service!

NEW ipr TOOL GENERATION

SAFETY, HANDLING, ECONOMY, FATIGUE STRENGTH

Extension of service of life

fatigue strength: By using new heat-treatable steel and constructions changes we increased the available cycles and the fatigue strength of the new developed ipr-tools.

SAFETY

your safety: over and over accidents happens during the retreat of the tools. Producer-independent. This is impossible by proper use. To minimize these risks of accidents, we have developed the **fingersave**

protection of tools: Sometimes our tools are actuated by hydraulic devices of other manufacturers which caused pollution of the hydraulic oil by swarf. To avoid this problem we integrate an oil filter between cylinder and nipple.

INCREASE OF ERGONOMICS AND EFFICIENCY

Handling: For all tools of the new generation we offer optional accessories which alleviates use. One example is our new function handle. This handle serves one-hand operation and replaces remote control of hydraulic aggregate.

PRODUCT RANGE EXPANSION

hydraulic cuttingheads: our cutting heads are available in versions 'light', 'steel' and 'power'. Together with the, from many users highly desired, lever lock.

'power' needs no explanation

'steel' especially developed for steel armoured, up to 2mm Ø, cables

'light' stands for light weight. The lightest tool in our range. The weight reduction is typical our tools.

ECONOMY

accessories for hydraulic crimping heads: At hexagonal crimps a 100% increase of economy is reached with the new developed ipr-tools by use of stroke limiter. That means you need with our new tools only half the time.

5 years warranty



We offer with each new purchase of ipr tool our all-round carefree package. With this all-round carefree package you get 5 years warranty inclusive 1 maintenance per year. This also applies for all expendable parts (excluding of maloperation).

This is financial planning reliability over the whole period of amortisation.



DISTINGUISHABLE GOOD TOOLS



WORK PROTECTION - FOR YOUR SAFETY

FINGERSAFE

All available hydraulic cuttingheads have a high safety risk if the knife is completely moved out. Between side plates and cutting knife arises a free space and at automatic return of knife it can come to injuries of the user.



ipr cuttingheads with integrated fingersafe prohibits risk of injuries!



FINGERSAFE = WORK PROTECTION FOR HYDRAULIC TOOLS

This safety risk exists also at hydraulic crimpingheads if dies are completely moved out.



In the worst case the fingers are crumpled immedicable.

The claimant loses utilisability of his hand, the company loses a valuable worker.

For crimpingheads we offer for all tools of current production fingersafe as accessory.

HYDRAULIC CRIMPINGHEAD ipr150hP-MM

AiR

THE SUPER LIGHT
ipr150hP-MM



crimping force: 154 kN
working pressure: 850 bar
crimps up to code: 34 (300 mm²)

AIR-SPRING-TECHNOLOGY
lightweight and compact design
H-shaped crimpinghead
one-hand adjustment
integrated oil filter
quick-release nipple
dust protection cap
ergonomic handling
fast and efficient work

dimensions: Ø 90 x 267 mm
weight: 3,0 kg

article number: 150138

Hydraulic crimpinghead ipr150hP (3,0 kg) is optimized for works in confined space. The fork is very slim. Crimping die adapter can be removed and insert with two fingers. So you get around every cable and use power as well as speed of hydraulic aggregate.

Easy removable upper crimping die adapter for optimal handling.

ACCESSORIES

STROKE LIMITER



FINGERSAFE



fingersafe
handle
case
stroke limiter
crimping dies

HYDRAULIC CRIMPINGHEAD ipr300hP

AiR
M



article number: 150149

WE SAY: one drive for all tools. That saves costs, weight and facilitates work considerably. The crimpinghead is super light and ergonomic.

Driven by our hydraulic aggregate ipr850HA-UNI-FUTURE-II you can work quickly and efficiently.

THE SUPER LIGHT ipr300hP



crimping force: 300 kN
working pressure 850 bar
crimps up to code 44 (625 mm²)

AIR-SPRING-TECHNOLOGY
lightweight and compact design
H-shaped crimpinghead
one-hand adjustment
integrated oil filter
quick-release nipple
dust protection cap
ergonomic handling
fast and efficient work

Dimensions: Ø 90 x 305 mm
Weight: 5,2 kg

CRIMPING DIE ADAPTER



FINGERSAFE



fingersafe
handle
case
stroke limiter
crimping dies
crimping die adapter

HYDRAULIC CRIMPING HEAD ipr550hP



AiR
M

THE SUPER LIGHT ipr550hP



crimping force: 540 kN
working pressure 850 bar
crimps up to code 58 (1.000 mm²)

AIR-SPRING-TECHNOLOGY
lightweight and compact design
H-shaped crimpinghead
one-hand adjustment
integrated oil filter
quick-release nipple
dust protection cap
ergonomic handling
fast and efficient work

dimensions: Ø 118 x 297 mm
weight: 10,4 kg

article number: 150126

Hydraulic crimpinghead ipr550hP is optimized for works up to 1.000 mm².

Driven by our hydraulic aggregate ipr850HA-UNI-FUTURE-II you can work quick and efficiently. Also with aggregate ipr850HA-ED100.

CRIMPING DIE ADAPTER



HORIZONTAL SUSPENSION



ACCESSORIES



fingersafe
handle
case
crimping dies
crimping die adapter
adapter for crimping dies
horizontal suspension
foot
pivoting connection for nipple

HYDRAULIC CRIMPING HEAD ipr550hP-85-big

AiR
M



article number: 150559

The hydraulic crimping head ipr550hP-85-big is optimized for overhead line construction. It crimps up to 1.200 mm² Cu and Al/St-ropes up to 1055 mm².

Driven by our hydraulic aggregate ipr850HA-UNI-FUTURE-II you can work quick and efficiently. Also with aggregate ipr850HA-ED100.

FUNCTIONAL HANDLE



HORIZONTAL SUSPENSION



THE SUPER LIGHT ipr550hP-big



crimping force: 541 kN
working pressure: 850 bar
crimps up to code 62
fork width: 54 mm

AIR-SPRING-TECHNOLOGY
lightweight and compact design
H-shaped crimpinghead
one-hand adjustment
integrated oil filter
quick-release nipple
dust protection cap
ergonomic handling
fast and efficient work

dimensions: Ø 132 x 309 mm
weight: 11,3 kg

ACCESSORIES



fingersafe
functional handle
stroke limiter
pivoting connection for nipple
case
crimping dies
horizontal suspension

HYDRAULIC CRIMPINGHEAD ipr990hP-95/110

AIR
SPRING

THE SUPER LIGHT
ipr990hP



crimping force: 960 kN
working pressure: 850 bar
95 crimps up to code: 68 (1.200 mm²)
110 crimps up to code: 85 (2.500 mm²)

AIR-SPRING-TECHNOLOGY
lightweight and compact design
H-shaped crimpinghead
one-hand adjustment
integrated oil filter
quick-release nipple
dust protection cap
ergonomic handling
fast and efficient work

article number -95: 150111, article number -110: 150112

Our super lightweight the crimpinghead ipr990hp with 100 tons crimping force weights only 20 kg!

Easy to carry!

More precisely cut the rope with the hydraulic cuttinghead ipr45hS, both driven from our mobile lightweight hydraulic aggregat ipr850HA-UNI-FUTURE-II.

dimensions -95: Ø 150 x 355 mm
dimensions -110: Ø 162 x 355 mm
weight: 20,0 kg

HORIZONTAL SUSPENSION



ACCESSORIES

fingersafe
handle
case
crimping dies
crimping die adapter
adapter for crimping dies
horizontal suspension
foot
pivoting connection for nipple



HYDRAULIC CRIMPINGHEAD ipr990hP-110-long

AiR
M



THE SUPER LIGHT ipr990hP-110-long



crimping force: 960 kN
working pressure: 850 bar
crimps up to code SK85 | AK82 (2.500 mm²)
fork width: 60 mm

AIR-SPRING-TECHNOLOGY
lightweight and compact design
H-shaped crimpinghead
one-hand adjustment
integrated oil filter
quick-release nipple
dust protection cap
ergonomic handling
fast and efficient work

article number: 150103

The hydraulic crimping head ipr990hP-110-long is designed for connecting bolt pins and sleeves on high voltage lines. Crimps up to 2.500 mm² with octagonal and hexagonal crimping die.

dimensions: Ø 167 x 384 mm
weight: 22,0 kg

ACCESSORIES

TWO HAND HANDLE



VERTICAL SUSPENSION



crimping die adapter above and below
two hand handle
case
crimping dies
vertical suspension
horizontal suspension
pivoting connection for nipple

HYDRAULIC CRIMPINGHEAD ipr1000hP-110

AiR
M

THE SUPER LIGHT ipr1000hP



crimping force: 960 kN
working pressure: 850 bar
crimps up to code: SK85 | AK82 (2.500 mm²)
for insulation diameter: 250 mm
width of bracket: 40 mm

AIR-SPRING-TECHNOLOGY
lightweight and compact design
H-shaped crimpinghead
one-hand adjustment
integrated oil filter
quick-release nipple
dust protection cap
ergonomic handling
fast and efficient work

dimensions: Ø 168 x 252 mm
weight: 25,9 kg

article number: 17030201

Hydraulic crimpinghead iPr1000hP-110 was designed for cable with heavy jacket.
Crimps up to 2.500 mm² with octagonal dies.

With this crimpinghead you can reach easily to the place of crimp because of the large bracket.

ACCESSORIES

HANDLE



VERTICAL SUSPENSION



crimping die adapter above and below
handle
case
crimping dies
vertical suspension

HYDRAULIC CRIMPINGHEAD ipr1500hP-130



AiR
M

THE SUPER LIGHT ipr1500hP



crimping force: 1500 kN
working pressure: 850 bar
crimps up to code: AK94 (3.200 mm²)
for insulation diameter: 250 mm
width of bracket: 50 mm

AIR-SPRING-TECHNOLOGY
light and compact construction
H-shaped crimpinghead
integrated oil filter
fast locking nipple
dust cap
ergonomic handling
fast and efficient working

dimensions: Ø 210 x 595 mm
weight: 47,5 kg

article number: 17030202

The largest of our hydraulic crimpingheads. Crimps up to 3.200 mm².

Driven by our hydraulic aggregate ipr850HA-UNI-FUTURE-II you can work mobil. This set is used successfully worldwide.

ACCESSORIES

CRIMPING DIE ADAPTER



CRIMPING DIE



crimping die adapter above and below
handle
case
crimping dies
vertical suspension

DIES

type SK



hexagonal dies DIN 48083 – part 4
for connection material DIN 46235, DIN 46267 for Cu, Al and Al/St,
Aldrey-ropes DIN 48201.

C-shell-die for crimpinghead ipr150hP

code 6 – 34; crimping width 5 – 25 mm; 2,5 – 300 mm²
(also for crimping die adapter ipr300PAC and ipr550PAC)

full-die for crimpinghead ipr300hP (Ø 60 mm)

code 10 – 44; crimping width 14 – 40 mm; 25 – 625 mm²

full-die for crimpinghead ipr450hP (Ø 75 mm)

code 12 – 58; crimping width 14 – 40 mm; 16 – 1000 mm²

full-die for crimpinghead ipr550hP (Ø 75 mm)

code 12 – 58; crimping width 14 – 40 mm; 16 – 1000 mm²

full-die for crimpinghead ipr550hP-85-big (Ø 85 mm, long bottom part):

code 13 – 62; crimping width 14 – 40 mm; 16 – 1200 mm². Al/St - ropes up to 1055 mm².

full-die for crimpinghead ipr990hP-95 (Ø 95 mm)

code 13 – 68; crimping width 25 – 60 mm; 120 – 1200 mm²

full-die for crimpinghead ipr990hP-110 (Ø 110 mm)

code 13 – 85; crimping width 25 – 60 mm; 120 – 2500 mm²

6M-Platten-die for crimpingheads bis 60 kN

code 5 – 28; crimping width 5 und 7 mm; 6 – 240 mm²

type SH



hexagonal dies DIN-similar
for cable lugs and connectors of copper.

C-shell-die for crimpinghead ipr150hP

data cluster 10 – 400 mm²; crimping width 7 – 14 mm
(auch für Presseinsatzadapter ipr300PAC).

full-die for crimpinghead ipr300hP (Ø 60 mm)

data cluster 120 – 625 mm²; crimping width 14 – 25 mm.

type SE

hexagonal dies - sizes on request

type SUP

rounding dies to chamfer Al and Cu sector-shaped conductors.

C-shell-die for crimpinghead ipr150hP

data cluster 4,1 – 22,5; crimping width 35 mm; 35 – 300 mm² se, 10 – 300 mm² sm
(also for crimping die adapter ipr300PAC)

type AK



octagonal dies for large crimping connections

full-die for crimpinghead ipr990hP-100-long:

data cluster 59 – 82; crimping width 25 mm; 1200 – 2500 mm².

full-die for crimpinghead ipr1000hP (Ø 110 mm)

data cluster 59 – 82; crimping width 25 mm; 1200 – 2500 mm²

full-die for crimpinghead ipr1500hP (Ø 130 mm)

data cluster 77 – 95; crimping width 25 mm; 1800 – 3200 mm²



ipr1500hP-130
with octagonal die

type SWM



dies for cable lugs and joints

C-shell-die for crimpinghead ipr150hP

(also for crimping die adapter ipr300PAC)

for Euro-Series: data cluster 6 – 300 mm²

for standard series: data cluster 10 – 300 mm²

for finely stranded conductors: data cluster 6 – 300 mm²

type SD



bolt-dies for cable lugs AMP

C-shell-die for crimpinghead ipr150hP

data cluster 60 – 100 mm²; crimping width 16 – 22 mm
(also for crimping die adapter ipr300PAC and ipr550PAC).

full-die for crimpinghead ipr300hP

(Ø 60 mm): data cluster 150 – 200 mm²; crimping width 24 – 28 mm

full-die for crimpinghead ipr550hP (Ø 75 mm)

data cluster 200 – 325 mm²; crimping width 28 mm

type SDK



contra-bolt-dies for cable lugs AMP

Like SD, but with contrary crimping geometry of bonnet and lower part

full-die for crimpinghead ipr300hP (Ø 60 mm)

data cluster 150 – 200 mm²; crimping width 24 – 28 mm

full-die for crimpinghead ipr550hP (Ø 75 mm)

data cluster 200 – 325 mm²; crimping width 28 mm

type SDD

bolt-dies for cable lugs DIN 46234.

C-shell-die for crimpinghead ipr150hP

data cluster 16 – 150 mm²
(also for crimping die adapter ipr300PAC).

type SDF

bolt-dies for finely stranded conductors.

C-shell-die for crimpinghead ipr150hP

data cluster 16 – 150 mm² (also for crimping die adapter ipr300PAC)

full-die for crimpinghead ipr300hP (Ø 60 mm)

data cluster 120 – 300 mm²

type SRD



Oval-dies for double cable lugs

C-shell-die for crimpinghead ipr150hP

data cluster 22 – 32; crimping width 20 – 30 mm; 2 x 50 – 2 x 120 mm²
(also for crimping die adapter ipr300PAC).

type SRH

Oval-dies for H-junction joints.

C-shell-die for crimpinghead ipr150hP

data cluster 22 – 32; crimping width 20 – 30 mm; 2 x 50 – 2 x 120 mm²
(also for crimping die adapter ipr300PAC)

full-die for crimpinghead ipr300hP (Ø 60 mm)

data cluster 30 – 34; 2 x 95 – 2 x 150 mm².

type SO

Oval-dies to chamfer oval joints DIN 48217 and H-junction joints

C-shell-die for crimpinghead ipr150hP

(also for crimping die adapter ipr300PAC)

oval crimping connectors:

for Al and Cu; data cluster 10 – 26; crimping width 5 mm; 10 - 120 mm²
for St; data cluster 18 – 25; crimping width 5 mm; 35 – 95 mm²

H-junction joint:

for Cu; data cluster 16 – 21; 16 – 35 mm²

type STT

Trapeze-dies for cable end sleeves

C-shell-die for crimpinghead ipr150hP

data cluster 16 – 185 mm²; crimping width 20 – 26 mm
(also for crimping die adapter ipr300PAC)

type SAL/ST

settling-dies to settle out Al/St-ropes

C-shell-settle dies for crimpinghead ipr150hP

data cluster 50/8 – 265/35 mm²

(also for crimping die adapter ipr300PAC)

CLASSIFICATION OF CRIMPING HEADS BY CODE

CRIMPING DIE TABLE

Sechskant-Pressseinsätze nach DIN 48083 Teil 4

für Verbindungsmaterial nach DIN 46235, DIN 46267, Cu, Al und Al/St, Aldrey-Seile nach DIN 48201

Stand: 27.10.16

Kenn- zahl	ipr-Werkzeuggröße										Bezeichnung	Pressbreite								Kupfer		Aluminium		Aluminium-Stahl		Aldrey- Seile
	6M	120	150	Adapter 60/75		300	450	550	550	990		990	6M	C	CS	60	75 75L	85	95	130	zug- entlastet	zugfest	zug- entlastet	zugfest	Alu-Hülse	
5	x										SK 5	5								6						
6	x			x							SK 6	5	14							10						
7	x			x							SK 7	5	10													
8	x	x	x	x	x						SK 8	5	14 ¹	14 ¹						16	10 - 16				16/2,5 25/4 35/6 50/8	
9	x	x	x	x	x						SK 9	5	14													
10	x	x	x	x	x	x					SK 10	5	14 ¹	14 ¹	14					25	25				70/12 95/15	
11	x	x	x	x	x	x					SK 11	5	14	14 ¹											25	
12	x	x	x	x	x	x	x	x			SK 12	5	14 ¹	14 ¹	14	14				35	35	16 - 25	16 - 25	16/2,5 25/4	25	
											SK 12B	7														
13	x	x		x	x	x	x	x	x	x	SK 13	5	14	12 ¹	14	14	25	25	25						120/20 150/25	
14	x	x	x	x	x	x	x	x			SK 14	5	14 ¹	14 ¹	14	14				50	50	35	35	35/6	35	
											SK 14B	7														
15		x		x	x	x	x	x	x	x	SK 15		14	12 ¹	14	14	25	25	25						44/32 50/30 125/30 170/40 185/30 210/35 230/30 240/40 265/35 305/40 340/30 385/35 450/40 495/35 570/40	
16	x	x	x	x	x	x	x	x			SK 16	5	14 ¹	14 ¹	14	14				70	70	50	50	50/8	50	
											SK 16B	7														
17		x		x	x	x	x	x	x	x	SK 17		14	12 ¹	14	14	25	25	25						210/50 300/50 380/50 510/45 560/50 650/45 1045/45 1055/45	
18	x	x	x	x	x	x	x	x			SK 18	5	14 ¹	14 ¹	14	14				95		70	70	70/12	70	
											SK 18B	7														
19	x		x	x	x	x	x	x	x	x	SK 19		14	14 ¹	14	14	25	25	25						95/55 435/55	
20	x	x	x	x	x	x	x	x			SK 20	5	14 ¹	14 ¹	14	14	25			120	95				95	
21		x		x	x	x	x	x	x	x	SK 21		14	14 ¹	14	14	25	25	25						105/75 120/70 490/65 550/70	
22	x	x	x	x	x	x	x	x			SK 22	5	14 ¹	14 ¹	14	14	25			150	120	95 - 120	95	95/15		
											SK 22B	7	25 ¹		40	40	40	60							680/85	
23	x		x	x	x	x	x	x	x	x	SK 23		14	14 ¹	14	14	25	25	25						120	
25	x	x	x	x	x	x	x	x	x	x	SK 25	5	14	14 ¹	14	14	25	25	25	185	150	150	120	44/32 50/30 120/20		
											SK 25B	7	25 ¹		40	40	40	60	40	60						
											SK 28S				5 ¹											
28	x	x	x	x	x	x	x	x	x	x	SK 28	5	14 ¹	14 ¹	14	14	25	25	25	240		185	150 - 185	125/30 150/25		
											SK 28B	7	25 ¹		40	40	40	60	40	60					150 - 185	
											SK 30		17 ¹	17 ¹	17	17	25	25	25							
30		x		x	x	x	x	x	x	x	SK 30B	25 ¹		25	40	40	60	40	60		185			95/55 170/40 185/30		
											SK 32S				5 ¹											
32		x	x	x	x	x	x	x	x	x	SK 32		17 ¹	17 ¹	17	17	25	25	25	300		240				
											SK 32B	25 ¹		25	40	40	60	40	60							
34		x	x	x	x	x	x	x	x	x	SK 34		17 ¹	17 ¹	17	17	25	25	25							
											SK 34B	25 ¹		25	40	40	60	40	60							
38											SK 38				17	17	25	25	25	400		400	300	105/75 120/70 210/35 210/50 230/30 240/40 265/35 300/50 305/40 340/30		
											SK 38B				25	40	40	60	40	60						
42											SK 42				17	25	25	25	25	500					380/50 385/35	
											SK 42B				25	40	40	60	40	60						
44											SK 44				17	17	25	25	25	625		500				
											SK 44B				40	40	40	60	40	60						
46											SK 46				25	25	25	25			500				435/55 450/40	
											SK 46B				40	40	40	60	40	60						
50											SK 50				25	25	25	25			625				495/35 510/45 490/65	
											SK 50B				40	40	40	60	40	60						
52											SK 52				25	25	25	25		800		625			570/40 560/50 550/70	
											SK 52B				40	40	40	60	40	60						
58											SK 58				25	25	25	25		1000		800			650/45 680/85	
											SK 58B				40 ¹⁾	40	40	60	40	60						
60											SK 60 ²⁾				25	25	25			1200		1000				
											SK 60B ³⁾															
62											SK 62 ²⁾				25	25	25			1200					1045/45 1055/45	
											SK 62B ³⁾															
66											SK 66 ²⁾															
68											SK 68 ²⁾															
70											SK 70 ²⁾															
72											SK 72 ²⁾										1600					
76											SK 76 ²⁾										1800					
80											SK 80 ²⁾										2000					
85											SK 85 ²⁾										2500					

B = Breitpressung = Wirtschaftlichkeit
S = Schmalpressung

¹⁾Nur für Verpressung von Aluminium und Kupfer

²⁾Nur für ipr550HP

³⁾Kennzahlgröße außerhalb der Normreihe

Für Pressköpfe der Typen ipr300HP, ipr450HP und ipr550HP sind Pressseinsätzeadapter zum Einsetzen der Pressseinsätze Typ C erhältlich.

Für Presskopf vom Typ ipr150HP gelten als Standard in der Normalbreite die Pressseinsätze Typ C.

Für Presskopf vom Typ ipr120HP und ipr150HP sind speziell schmale Reihen der Pressseinsätze Typ CS konzipiert.

Für Verpressungen über 1000 mm² setzen Sie sich bitte mit ipr in Verbindung.

Sondergrößen in Kennzahl und Breiten möglich.

Bitte fragen Sie bei Bedarf die benötigten Pressseinsätze an.

Bestellbeispiele: ipr-Werkzeuggröße Bezeichnung - Pressbreite
ipr 60 SK 42-17
ipr 110 SK 80-25
ipr C SK 25-14
ipr 75L SK 44-17

Unsere Anwendungstechnik berät Sie gerne!



CASES AND BAGS - UNBEATABLE FEATURES

FROM LIGHTWEIGHT TO WATERPROOF

For all cutting- and crimpingheads we offer a very high-quality case.

For the hydraulic aggregate ipr850HA-UNI-FUTURE-II and safety cutting units you have the choice between case and bag.

Lightweight bags or cases:

For our hydraulic aggregate UNI FUTURE and safety cutting units we offer our super lightweight rain safe bags or our robust aluminum profile cases of alucubont with edge protection.



MOBILE TOOL BOX

FAT MAX

- Mobile tool box with 113 l shipping volume
- Heavy duty wheels-easy to maniostrar
- Safe storage of tools and accessories
- Integrated waterproof lock
- Vertical storage area + carry included
- Large, stainless metal close
- Material: structural foam
- Tightness IP54: protection against dust deposits and all-sided pointed water
- Dimensions 910 x 516 x 431 mm

article number: 160162YX (113 l Version)

article number: 160160YX (90 l Version)



Peli suitcase:

- Waterproof, resistant and dust-proof
- Easy to open two-stage closure
- Open-cell core with a robust wall construction
- Robust, light weight
- O-Ring gasket
- Automatic pressure adjustment valve
- Ergonomic handle with rubber sheathing
- Stainless steel fittings
- Stainless steel padlock lock protection
- Unconditional guarantee of quality
- Inner foam protects the tool

The Peli suitcase are available for all ipr tools.
The picture shows exemplary the case for the ipr300hP with all accessories.



PIPE JACKING TOOL ipr65hRPW



to squeeze gas pipes, water-bearing steel pipes up to DN 50 and PE-pipes in cold conditions

article number: 150600

TECHNICAL SPECIFICATIONS

Crimping force:	181 kN
Maximal pressure:	850 bar
Opening width:	65 mm
Weight:	11,0 kg
Dimensions:	412,5 x 231,5 x 161 mm



BLOCKING VALVE FOR THE PIPE JACKING TOOL

TO CONNECT WITH OUR PIPE JACKING TOOL ipr-100hRPW and ipr65hRPW



Technical specifications:

needle valve with non-return function to block and reduce oil flow in one direction of flow.

weight: 1,1 kg

max. working pressure: 1000 bar

dimensions: 235 x 40 x 75 mm

blocking valve for pipe jacking tool prevents reduction pressure in the tool. So it is possible to hold hydraulic pressure over a not limited time.

Blocking valve will be connected between hydraulic aggregate and pipe jacking tool.

COMPATIBLE WITH OUR HYDRAULIC AGGREGAT IPR-850HA-UNI-FUTURE-II AND HYDRAULIC FEET PUMP IPR700PES

PIPE JACKING TOOL ipr100hRPW



to squeeze gas pipes, water-bearing steel pipes up to DN 80 and PE-pipes.

article number: 150500

TECHNICAL SPECIFICATIONS

Crimping force:	154 kN
Maximal pressure:	850 bar
Opening width:	100 mm
Weight:	12,9 kg
Dimensions:	503 x 240 x 76 mm



BLOCKING VALVE FOR THE PIPE JACKING TOOL

TO CONNECT WITH OUR HYDRAULIC AGGREGATE
ipr850HA-UNI-FUTURE-II



Technical specifications:

needle valve with non-return function to block and reduce oil flow in one direction of flow.

weight: 1,1 kg

max. working pressure: 1000 bar

dimensions: 235 x 40 x 75 mm

blocking valve for pipe jacking tool prevents reduction pressure in the tool. So it is possible to hold hydraulic pressure over a not limited time. Blocking valve will be connected between hydraulic aggregate and pipe jacking tool.

COMPATIBLE WITH OUR HYDRAULIC AGGREGAT IPR-850HA-UNI-FUTURE-II AND HYDRAULIC FEET PUMP IPR700PES

SMALL, LIGHTWEIGHT, HANDY, UNIQUE

GAS CHARGING DEVICE ipr230SLG SET



GAS CHARGING DEVICE ipr230SLG

TECHNICAL SPECIFICATIONS:

weight:	28,0 kg
2 inputs:	35-230 bar
2 outputs:	up to 230 bar
hydraulic connection for ipr850HA-ED100	
dimensions:	340 x 292 x 252
article number:	17030238



AND HYDRAULIC AGGREGATE ipr850HA-ED100 SET WITH FILLING VALVE AND ACCESSORIES

The nitrogen charging device SLG230 enables fast, easy and economic fill or complement of required filling pressure in circuit breakers up to 230 bar. TÜV (Technical Inspection Association) tested according to pressure directive 97/23/EG. This tool is no subject to the ordinance for pressure vessels, because the volumen of the charging apparatus was reduced to under 1 liter. Because of that the annual TÜV impairment is not applicable. We advice the regular check of gaskets through our service.

The hydraulic aggregate iprED100 serves to drive the SLG230 and all hydraulic crimping- and cutting tools. The iprED100 is a pur power unit, constructed for long-term load. It has got an activated detection of pressure requirements with switch-off upon reaching the essential working pressure from 20 up to 850 bar, a built in pressure absorber for better functions and extended adjustments, as well as inching function for the interrupted tool feed.

ACCESSORIES FOR THE CONNECTION

SET CONSISTS OF:

- filling valve for piston accumulator
- gas bottle valve connection DIN 477
- 1 extension for filling
- 2 x 3m nitrogen hose
- case
- article number: 15120104



CONUS ANCHOR CLAMP RETRACTOR



For easier fitting at hoisting of conus anchor clamps on Al/St-ropes 537/53, 560/50, 1055/45

TECHNICAL SPECIFICATIONS

Crimping force:	50 kN
Maximal pressure:	700 bar
Stroke:	50 mm
Weight:	3,3 kg
Dimension (diameter x length):	100 x 403 mm

EXTREME PRESSURE

HYDRAULIC HIGH PRESSURE HOSES

STEELARMoured up to 1.400bar

NONCONDUCTIV up to 700bar



C-Series
working pressure 1000 bar
burst pressure 3200 bar
bend radius 80 mm
weight 0,305 kg/m
internal diameter 6,3 mm
external diameter 13,3 mm
temperature -40C up to +100C
buckling safety because of steel reinforced construction
abrasion-resistant case
excellent resistant strength



S-Series
working pressure bis 1400 bar
burst pressure 3500 bar
bend radius 65 mm
weight 0,160 kg/m
internal diameter 4,0 mm
external diameter 9,8 mm
temperature -30C up to +60C



I-Series
working pressure 700 bar
burst pressure 2800 bar
bend radius 25 mm
weight 0,067 kg/m
internal diameter 4,0 mm
external diameter 9,1 mm
temperature -40C bis +100C



as stated above
figure left and above length 3,0 m
figure below and right length 10,0 m
special length are possible.

SAFETY

Hydraulic hoses has to be check avery 6 month and changed every 2 years according to BG (employers mutual insurance association). Under certain conditions this terms can be extend.

We will be pleased to inform you in detail!

Please ask and especially:
let check your hoses continously.

At normal construction sites bend radius can not comply. Result are hair cracks in the inner of the hose. At 850 bar pressure oil cuts like a knife.
Many users don't know about this danger.

The check of the hose does an external laboratory for us. The donation incl. transport needs aprox. 1 week.

NONCONDUCTIV up to 700 bar



I-Series
working pressure 700 bar
burst pressure 2800 bar
length 10 m
bend radius 35 mm
weight 0,164 kg/m
internal diameter 6,6 mm
external diameter 14,0 mm

All hoses with bend protection, quick coupling, dust protection caps and filled with insulating hydraulic oil Shell Naturelle HF-E 15.





SERVICE IS OUR STRENGTH

SERVICE WORK SHOP

We offer for all hydraulic tools and accessories a manufacturer-independant maintenance and repair service.

Our staff got 30 years experience with hydraulic tools. Our master-led work shop knows surely the correct solution for your tool.

CHECK

Check safety cutting unit according to DIN VDE 0105 part 100, section 4.6 and VGB 4 inclusive change of oil and documantation in form of a test certificate.

In case you need new parts we give you a quotation and be in contact with you.

fixed price: € 195,00

plus transportation costs and VAT

MAINTENANCE

Maintenance of you hydraulic tools.

fixed price: € 95,00

plus transportation costs

REPAIR

We do repairs of tools of all manufacturers at fair prices. Please send us your defect tool. You will get a quotation.

PRICES

Our prices for repairs are put together as follow:

- € 5,95 per work unit á 5 minutes

- material costs (as required)

- transportation costs

- plus VAT

For further information please call our sales team of ipr TOOLS.

Telephon +49 9568 896900

Please send your tools to **Austr. 101 in D-96465 Neustadt bei Coburg**

or use our pick up service: just call our sales team, get an UPS-Label via eMail, print, stick on parcel, finished. On the next day UPS picks up your tool. That is equal to zero effort for you but 100% service from us.

We want, that you can concentrate on your area of expertise. Therefore, is it our goal to reduce your time to select an optimal tool, as well as for maintenance and repairs to a minimum. We think and act in your best interests as far as possible, enquire where it's necessary and do it reliable.

We are proud of our good reputation, we have complied up by us in many years.

Trust in our competence.

WE DO REPAIRS OF
HYDRAULIC TOOLS
ALL MANUFACTURERS -
FAST AND
LOW-PRICED!



DAS HANDBWERK
DIE WIRTSCHAFTSMACHT. VON NEBENAN.

CRACK DETECTION

We support you through raw material and material tests to avoid damage that to prevent the associated downtime and, above all, the health and operational capacity of you, the user. Each tool is subject to material fatigue. In the case of old tools or very intensively used, there is a risk of cracking and fracture.

And the danger is rising, because there have already been tools in use for decades, which can be used for different maximum pressures. If hydraulic units with high pressure meets tools whose maximum pressure is lower will not only reduce material fatigue faster but also individual components can burst. Please consider how intensive today tool, e.g. compared to 1980, is in use. And already at that time there were hydraulic units, which works with 850 bar superstructures and tools which were designed and approved for 465 bar, 625 bar or 700 bar. In some cases this tool is still used today.

For your safety, we let approved your tool by a certified DIN EN ISO 9712 contracting partner with a magnetic powder test, the same procedure which use the TÜV (Technical Inspection Association) also for road bridges!



Price per tool: only € 49,50 incl. test certificate

Price is valid as far as ipr can have several tools collected.
Please schedule appropriate time or speak about the timing with us.
Costs of € 249 for an individual examination.

article number: 300023



HOSE TEST

Although we have repeatedly pointed for many years the BG regulation (trade association) for hose testing, this safety service is not yet known by everybody.

DGV BGR 237 Hydraulic hose - test specification

Subject to the operational and machine-specific determination of test periods by the operator of the work equipment and subject to specific specifications by the machine manufacturer or the manufacturer of the hoses or hose lines, the BGR on page 26 of the test periods listed in table 1 for hydraulic hose lines are recommended on page 28 table 2 the replacement intervals.

Accordingly, hose lines are available on hydraulically hand-operated tools have to be **checked every 6 months and switch off after 2 years.**

Price per hose test: only € 38,00 incl. test certificate

article number: 300042



We let your hose externally and independently checked by a TÜV-certified company. Due to the risk assessment and specific operational conditions if necessary, shorter inspection periods can be set. You can also use longer time limits, provided that the security-technically justifiable and this is justified.

In the presence of a documented risk assessment, the period may be up to 24 months (exam) | 6 years (exchange).

ELECTRICAL TEST

DGUV electrical test

All transportable electrical equipment must be transmitted every six months, or in the case of a appropriate risk assessment annually, an electrical examination according to DGUV. There must be no danger to persons of electrical tools. The test method thus serves to prove the electrical safety. The tools are then safe if there is no danger to personal, materials and facilities. Prerequisite this means that appropriate protective measures are implemented in accordance with the battery- and even with power-operated aggregates and safety cutting systems.

We take your electronic tool, externally and independently, into a functional and measurement test. In this way we guarantee quality and safety to the highest standard.

Price per electric test: only € 32,90 incl. test certificate

article number: 300049



PUNCH, CUT, CRIMP

RE 60: 1 DRIVE - 3 TOOLS



The RE 60 features our unique QuickChange System™, allowing you to quickly and easily switch between interchangeable heads for cutting, crimping and punching.

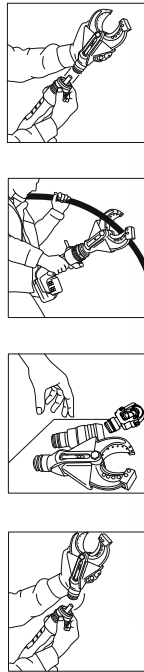
Now your most critical tasks can be accomplished with one innovative tool. No more back and forth to the truck, searching for different tools.

Whether you're cutting wire, crimping lugs or punching boxes, the RE 60 helps you maximize your productivity and efficiency on the jobsite.

SPECIFICATIONS

- automatic ram retraction
- onboard diagnostics
- 60 kN force output
- cables up to 50 mm O.D.
- punch holes up to 3 mm mild steel.
- longest service interval in the industry (32.000 cycles).
- 360° head rotation.
- bright white LED
- rubber overmolded grip
- heavy-duty, blow-molded case
- on/off button for disabling tool when changing dies or heads.
- 18 V Advanced Lithium battery platform

THIS BATTERY TOOL WITH A 3-IN-1-SYSTEM TO CUTTING CABLES, CRIMPING LUGS AND PUNCHING HOLES. WITH ONE-HAND HANDLE, ERGONOMIC DESIGN AND THE LOW WEIGHT (ONLY 3,2 KG INCL. BATTERY) YOU CAN REACH DIFFICULT TO ACCESS AREAS WITH THIS VERSATILE TOOL.



blade set Cu/Alu
article number: 1601030



blade set ACSR
article number: 1601031



RE 60 - set incl. cutting-, crimpinghead, hole punching head, case, 2 accumulators, battery charger
article number: 1601000

AUTOMATIC RAM RETRACTION

During cutting and crimping, the ram will automatically retract once the cycle is completed. Punching applications require use of the release trigger.

ONBOARD DIAGNOSTICS

Built-in sensors and LED indicators ensure tool performance, allow the tool to operate in extreme temperatures (-10° to 50°C), monitor battery life and indicate when the tool requires a service.



Hole punching dies & accessories
article number: 1601005

The mechanic hand tool with the 3-in-1-system for cutting cables, crimping lugs and punching holes. It offers a hydraulic press power from 60 kN to cutting cables up to an external diameter 32 mm, crimping lugs up to 300 mm² wire size by pressing width 6 mm and punching holes up to 63,5 mm diameter.

HAND CRIMP TOOL

HPZ 50.1 Hydraulic crimping tool



TECHNICAL DATA

Hydraulic two-hand crimping tool in plastic case, for crimping copper and aluminium conductors with cross-sections 10 – 185 mm², 180° rotating crimping head hinges for changing connector and die

crimp force: 50 kN
length: 370 mm
weight: 3,1 kg
capacity: Cu 10 - 185 mm²
Al 10 - 150 mm²

article number: 15090214

HAND CRIMP TOOL

HPZ 80.1 Hydraulic crimping tool



TECHNICAL DATA

Hydraulic two-hand crimping tool in plastic case, for crimping copper and aluminium conductors with cross-sections 10 – 400 mm², 360° rotating crimping head hinges for changing connector and die

crimp force: 80 kN
length: 550 mm
weight: 7,0 kg
capacity: Cu 10 - 400 mm²
Al 10 - 300 mm²

article number: 17030049

BATTERY HAND CRIMP TOOL

Battery-powered hydraulic crimp tool APZ 50



SPECIFICATIONS

- Battery-powered hydraulic crimp tool for crimping copper and aluminium conductors with cross-sections 10-185 mm²
- 360° rotating crimping head
- Li-Ion Battery 18V / 3Ah
- Charger 18V-230V, also as 18V-120V US version available
- all available crimping dies of the hand hydraulic crimping tool HPZ 50.1 are usable
- 3 years or 20000 work cycles warranty
- manual return in every position possible
- LED battery status display
- Carrying strap
- without die sets
- in plastic case

crimp force: 50 kN
 dimensions: 329 x 331 x 75 mm
 weight: 4,3 kg
 capacity: Cu 10 - 185 mm²
 Al 10 - 150 mm²

article number: 1601022



HANDPRESSTOOL

RE 130-M MANUAL HYDRAULIC CRIMP TOOL



TECHNICAL SPECIFICATIONS

Weighting only 5,3 kg, the RE 130-M provides 130kN of hydraulic force output to crimp copper lugs and connectors up to 400 mm². The RE 130-M is specially designed for one-person operation. It features an industry-exclusive Head stand which allows users to more easily position the cable and lug between dies and crimp with greater stability. For increased manoeuvrability in tight spaces, the crimp head can be rotated up to 330°. Featuring the patent-pending RapidAdvance System™, the RE 130-M requires only 2 pumps to engage the lug.

length: 557 mm
weight: 5,3 kg
capacity: max. 400 mm² Cu
max. 240 mm² Alu

article number: 1601019

RE60 - MLR



The RE 60-MLR is designed to crimp large size cable lugs (up to 300 mm² Cu) while providing best-in-class comfort and ease-of-use thanks to its very compact, lightweight and ergonomic design.

The RE 60-MLR features the patent-pending RapidAdvance System™ which allows the user to engage the lug in just a single pump of the handle. This reduces the total amount of pumps needed for completing a crimp. The RE 60-MLR is also designed to make the pumping action as effortless as possible with its extremely low handle-force and ergonomic rubber handgrips.

The RE 60-MLR also features a very slim crimp head design that can be rotated 330° allowing easy access to cables even in the most confined panel spaces. The RE 60-MLR comes with a blow-molded plastic carrying case with space for 13 crimping dies. The case features unique die slot marking decals for faster crimp die identification and retrieval.

TECHNICAL SPECIFICATIONS

- hydraulic force output: 60 kN
- crimps up to:
300 mm² Cu, 6 mm pressing width
240 mm² Alu, 6 mm pressing width
- built-in pressure relief-valve

length: 425 mm
weight: 2,8 kg
capacity: max. 300 mm² Cu
max. 240 mm² Alu

article number: 1601018



LINE LOCATOR

SR-24 LINE LOCATOR

The SR-24 receiver can be used with a RIDGID® SeekTech® transmitter to locate the position of buried utilities. When an electromagnetic signal field is present on a metallic conductor, the SR-24 shows a map of the signal's estimated position and direction. When interfering or conflicting signals are detected, the SR-24 informs the operator, reducing the likelihood of an inaccurate result. With integrated GPS and Bluetooth™ technology, comprehensive locate data can be streamed to a smartphone or tablet and exported to GIS software.

- Mapping display. Real-time signal information including location, direction, depth and trustworthiness.
- Multiple antenna system. Dead spots, or nulls, are eliminated for greater speed and accuracy.
- Built-in GPS. Capture GPS coordinates for mapping and GIS software.
- Third party GPS connection. Integrated Bluetooth™ enables pairing with third party high resolution GPS units.
- Data streaming. Connect to Bluetooth™ enabled devices for comprehensive data logging.
- Smartphone/Tablet RIDGIDtrax App. Map and identify multiple tracks and waypoints and export trace data to GIS software.
- Recorded maps can be shared in KML (Google Earth) format through email.



RIDGIDtrax



RIDGIDtrax enables basic underground utility mapping in real time. Connect an Android or iOS device wirelessly to a RIDGID® SR-24 Utility Locator and RIDGIDtrax will display GPS position and depth of the target utility. Identify the type of utility (water, gas, electric, etc.) and display multiple utilities on the same map. A finished map can be saved and viewed inside the app or exported to a *.KMZ file for use with popular GIS programs such as Google Earth®.



PERFECT SOLUTION FOR WORKING UNDER VOLTAGE

TOOL SYSTEM METER INSTALLATION

Our tool set makes meter installation safer also at working under voltage (up to 1000V). It was developed on a request by a customer for a special operation.

The task:

Because of the compact construction of electric meters there is only less space for insulated tools in the region of screws. Therefore many fitters tend to remove the safety insulation of socket wrenches or to use an uninsulated steel bit, which is not allowed in the near of voltage and which can cause a short circuit. According to DIN the meter installation can be done under voltage if a compelling reason exists.

The solution:

Insulated socket wrenches of plastic material.

This tool was the start for development of our voluminous tool systems for meter installation.

Insulated socketwrenches



TECHNICAL SPECIFICATIONS

length 168 mm :: long

length 70 mm :: short

color code:

SW	name	colour	Nm max.
8	SSW 8	yellow	12
9	SSW 9	red	14
10	SSW 10	black	16

Insulated socket wrenches allow a safe installation of screws in the near of voltage. A special synthetic has adequate hardness values for the necessary torque (approx. 2 Nm). Our SW 8 even stands more than 12 Nm! Against rapid wear an injected steel part helps.

The Hager lock closure has a problem in practical use: Because of a „collar“ you can't reach the screw with an insulated socket wrench because the collar is too close. Because of work near voltage insulated tools are instructed.

With the insulated socket wrenches it is possible to reach the screws through the collar without problems and danger, because this socket wrench is as slim as a steel bit.

Immersion depth of a bit in the tool is adjusted with the screw driver AS 5 and bitholder.

article number: 130705

GALVANIC INSULATED BITS



TECHNICAL SPECIFICATIONS

length 115 mm

Our screwdriver bits are non-conductive and enable a fast and safe assembly of attachment screws also under voltage. For effective working the bits are color-coded. For every type of screw (slot, cross slot, pozidriv, pozidriv +/-) is one color. The size within the screw types is visible through different color gradations – so that the right tool is there on the first handle.

Galvanically insulated screwdriver bits:
To ensure the voltage stays in the components and not into the tool!

SCREW DRIVER AS5



TECHNICAL SPECIFICATIONS

1,5 Ah Li-Ionen-battery pack
compact design and low weight
powerful: 4,4 Nm
coupling with automatic switch-off
30-minutes-charging system
right-/left-handed rotation
21-stepped coupling
1/4" internal hexagonal adaptor
LED-help lights
geat blocking for manual operation
automatic switch-off coupling
torque accuracy of coupling +/- 5 %
length/width/height: 276 x 134 x 46 mm
coupling/Switch-off: 0,3-3,3 Nm
speed: 200/600 min-1
battery charging time: 15 min

With the cordless screw driver AS 5 the keeping of torque according to VDE (Europe's largest technical-scientific association) specifications for electronic meters is fulfilled. It is a kink screw driver with electronic switch-of coupling and a precise 21-step torque adjustment. The torque can be adjust from 0,29 – 4,40 Nm (+/- 5% guaranteed tolerance). Through switch of no energy is destroyed so the battery is protected and a longer work is guaranteed. Lithium-ion battery technologies provides a outstanding long working and storage times.

The cordless screwdriver AS 5 is in connection with our insulated and electrically separated bits and insulated socket wrenches suitable for working under voltage (1000 V)!

Our quick tightening tool **SSF10** makes a boring machine of your cordless screw driver for drills up to 10mm.

ABSORBING GUIDE JACKET



TECHNICAL SPECIFICATIONS

Wearless POM / FFH-M: wearless, stainless steel X 6 Cr 13
1/4" (6,3 mm)-BIT-hexagonal

The problem of centering slot screw should be familiar for everyone particular by working with the screw driver. Through slip down of the screw driver the divider could be burst out and there is danger to initiate a short circuit. Through us of a guide jacket the bit is centered on the screw and so damage is impossible. Absorbing guide jakets are not new but they are appropriate for working under voltage.

COMPONENTS

AS5: screw driver with insulating cap

spare battery: for AS 5

SSF: quick tightening tool

ZK1: flat nosed pliers

ZK2: round nosed pliers

Zipka: head lamp

BA 20: bit holder

SW 8: socket wrench

SW 9: socket wrench

SW 10: socket wrench

10 insulated **screw driver bits**

- 0,6 x 3,5
- 0,8 x 4,0
- 1,0 x 5,5
- 1,2 x 6,5
- PH 1
- PH 2
- PZ 1
- PZ 2
- PZ 1+/-
- PZ 2+/-
-

MGB: miniature gas bunner

DS2: torque screw driver

FFH: absorbing guide jacket black

3 sleeves

TKS: case

battery charger: for batteries of AS5

LED **hand lamp**, magnetic

lead sealing plier with side cutter

box for seals



MECHANIC HAND TOOLS

CRIMP TOOL

article number: 15090200



PE 7.1 forged | for crimping end splice from 0,25-2,5 mm², AWG 28-5,

article number: 15090207



PEW 9.90 | for crimping of ferrules from 0,25-0,75 mm², 1,0-1,5 mm², 2,5-4,0 mm² and 6,0 mm², AWG 23-10

article number: 15090203



PEW 8.185 | for crimping ferrules 0,08-16 mm² AWG 28-5

article number: 15090205



PEW 8.80 | For crimping insulated and uninsulated end splice 0,25-0,75 mm², 1,0-1,5 mm², 2,5 mm², 4,0 mm², 6,0 mm², AWG 23-10

article number: 15090208



PEW 12 (image w/o die) | to crimp almost every actual crimp-connectors with 0,08-95 mm²

article number: 15090201



PEW 8.87 | for crimping ferrules 0,08-10,0 mm² AWG 28-7

article number: 15090206



PEW 9.60 | With crimping-die for insulated connectors from 0,5-1,0 mm², 1,5-2,5 mm² and 4,0-6,0 mm²

With the PEW 12 you determine the three sizes for crimping. Please name your preferred size and we choose from approx. 200 present combinations the best for you.

The PEW 12 is also available as a accumulator-mechanic crimp tool. POWER MADE IN GERMANY!

article number: 15090202



PEW 8.88 | for crimping ferrules 0,08-16,0 mm² AWG 28-5

CABLE CUTTERS

article number: 15090204



PEW 8.186 | for crimping ferrules 0,08-10,0 mm²
AWG 28-7

article number: 15090032



D15 with opening spring | for cutting single, stranded and finely stranded aluminum and copper cables up to Ø 15 mm

article number: 15090034



D27 | for cutting single, stranded and finely stranded aluminum and copper cables up to Ø 27 mm

article number: 15090213



MPZ 30 | to crimping Cu and Al 6-50 mm²

article number: 15090031



D15 w/o opening spring | for cutting single, stranded and finely stranded aluminum and copper cables up to Ø 15 mm

article number: 15090035



D38 | for cutting single, stranded and finely stranded aluminum and copper cables up to Ø 38 mm

article number: 15090212



MPZ 55 | to crimping Cu and Al 6-120 mm²

article number: 15090033



D20 | for cutting single, stranded and finely stranded aluminum and copper cables up to Ø 20 mm

article number: 15090036 / 15090037



D60 / D100 | for cutting single, stranded and finely stranded aluminum and copper cables up to Ø 60 mm and Ø 100 mm

MECHANIC HAND TOOLS

STRIPPER

article number: 15090081



automatic 0,03-10,0 mm² | for standard insulation of single-, stranded- and finely stranded conductors

article number: 15090050



basic pliers without knives

article number: 15090042



for POF-cable
delivery imaged die incl. basic plier

article number: 15090082



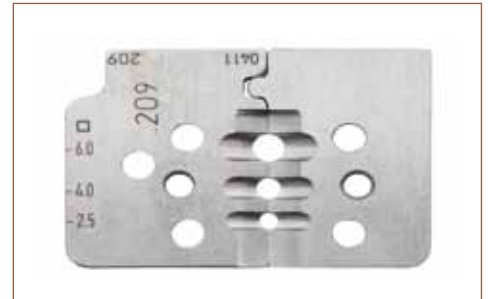
automatic 2,3-16,0 mm² | for standard insulation of single-, stranded- and finely stranded conductors

article number: 15090049



for teflon-coated cables with cable routing
delivery imaged die incl. basic plier

article number: 15090043



for solar cable „Radox 125“
delivery imaged die incl. basic plier

article number: 15090083



self-regulating | used for single- and stranded-cables with PVC-insulation and a variety from special insulations

article number: 15090041



for teflon-coated cables
delivery imaged die incl. basic plier

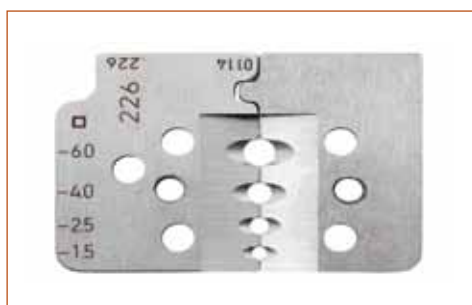
article number: 15090044



for special cable with teflon-coating and kapton film
delivery imaged die incl. basic plier

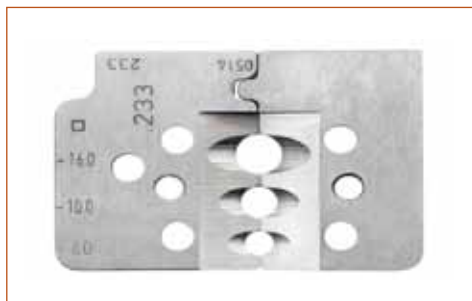
TOOL SET STREET LIGHTING

article number: 15090046



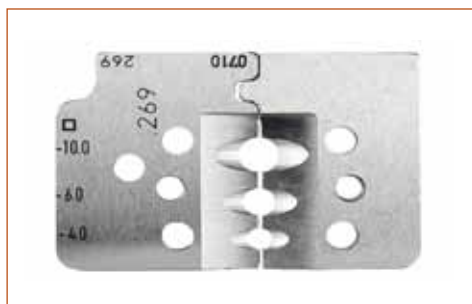
for solar cable
delivery imaged die incl. basic plier

article number: 15090047



for PVC-cable
delivery imaged die incl. basic plier

article number: 15090048



for solar cable 4-10 mm²
delivery imaged die incl. basic plier



SERVICE

Your desired tool is not in the catalogue either in our onlineshop? Please take about your wishes with our sales team You will be advise optimal.



COMPONENTS

Pressing plier for street lightning connectors
Cu rm 10 mm² | re 16 mm² (HZ K 7)

50 Stk. Pressure connector 10 mm² especially
developed for street lightning (Cu re 10)

34 Stk. Screw connector 2,5-16 mm² (2,5-16 re)

Screwdriver insulated SW 2,5 (SD 2,5)

Wire stripper 2,5-16 mm²
especially for solid conductors 10+16 mm² (AZ 2)

case with foam

article number 140006

INSULATED TOOLS UP TO 1000 V

Article numbers and further tools on request
and in our onlineshop.

At our company you get everything from one source:
tools from our own production,
tools from other appreciated manufacturer
and manufacturer independent repairs of hydraulic tools.

ELECTRICALLY ISOLATED BITS



all sizes
0,6 x 3,5 | 0,8 x 4,0 | 1,0 x 5,5 | 1,2 x 6,5 |
PH 1 | PH 2 | PZ 1 | PZ 2 | , PZ 1 +/- | PZ 2 +/-
article number: 130411

TORX BITS

sizes 10 | 15 | 20 | 25



ABSORBING GUIDE JACKETS

suitable for bit holder and screw driver:



4,0 x 0,8, Ø 4,5
article number: 130205



5,5 x 0,8, Ø 6,0
article number: 130207



5,5 x 1,0, Ø 8,0
article number: 130208

KNIVES

cable dismantling knife with sheet and protection cap.



cable dismantling knife with protection cap.



cable knife with changing blade



article number: 110025

THE CASE FOR OUR ELECTRICALLY ISOLATED BITS



Our bits case you can buy per piece!

If you are already in the possession of our isolated bits, you can easily order the case.

Narrow, high-quality and design-oriented plastic case.

With the case for our electrically isolated bits, you keep order and keep an overview.

CUT HINGE

-The continuous cutting hinge is extremely robust and ensures maximum stability.

STACKING LUGS

-The non-slip stacking lugs allow efficient stacking and picking more than one suitcase.

CLOSURE

-The elegant and sturdy closure elegantly completes the design of the case.

STABILITY

-The ribbed structure of the page is a visual design element and stability at the same time.

Small, light, compact, effective!

Artikelnummer: 130451

ELECTRICALLY ISOLATED BITS

article number	discription
130401	Bit 0,6 x 3,5 iso.
130402	Bit 0,8 x 4,0 iso.
130403	Bit 1,0 x 5,5 iso.
130404	Bit 1,2 x 6,5 iso.
130405	Bit PH 1 iso.
130406	Bit PH 2 iso.
130409	Bit PZ 1 +/- iso.
130407	Bit PZ 1 iso.
130410	Bit PZ 2 +/- iso.
130408	Bit PZ 2 iso.
130412	Bit Torx 10 iso.
130413	Bit Torx 15 iso.
130414	Bit Torx 20 iso.
130415	Bit Torx 25 iso.

PLIERS - FULL INSULATED

Fully insulated plier with coated working head to prevent short circuits with restricted opening angle of 30°.

2-layer safety isolated according to IEC 60900, special tool steel, chrome-plated, oil-hardened, cutting edges induction hardened, for hard and soft wire.

stripping plier



article number: 120150

side Cutter



article number: 120151

Snipe Nose Plier



article number: 120152

combination plier



article number: 120153

HANDLE AND ADAPTER

T-Handle, DIN 7436



T-Handle, hexagonal



voltage tester



extension Bar, 3/8", 250 mm



extension Bar, 3/8", 125 mm



screwdriver sockets



CUTTING TOOLS

ratchet cable shear



2-bedded safety dipped insulation
for 32 mm, length 250 mm
article number 120410

ratchet cable shear



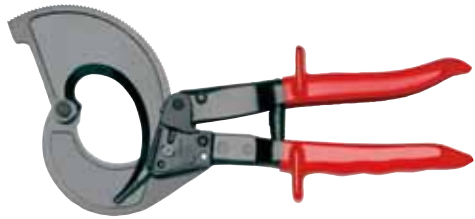
2-bedded safety dipped insulation
for 55 mm, length 400 mm
article number: 120412

cable shear with changeable knives



for Cu and Al cable
2-bedded safety dipped insulation
for 20 mm, length 320 mm
for 27 mm, length 600 mm

ratchet cable shear



2-bedded safety dipped insulation
for 50 mm, length 270 mm
article number 120411

side cutter



With precision knife inductiv hardened,
for hard and weak wire, of special steel for a long
life expactensy, chromed.
160 and 180 mm

power side cutter



For weak and Piano wire, knives inductiv hardened,
of high-alloyed steel, oil-hardened, chromed.
170 and 200 mm.
article number 170 mm: 120413
article number 200 mm: 120414

SCREWDRIVER

Screwdriver



ergonomically handle for less tiring working and
and maximum torque transmission handle printed
with VDE 1000 V, size and IEC 60900:2004

Socket wrench / Bit holder



Precise adjustment of the torque
Precise resolution (clearly perceptible - and
audibly) on reaching the set torque is exceeded
Fully insulated bit transducer designed for our
bits - or our range of sockets

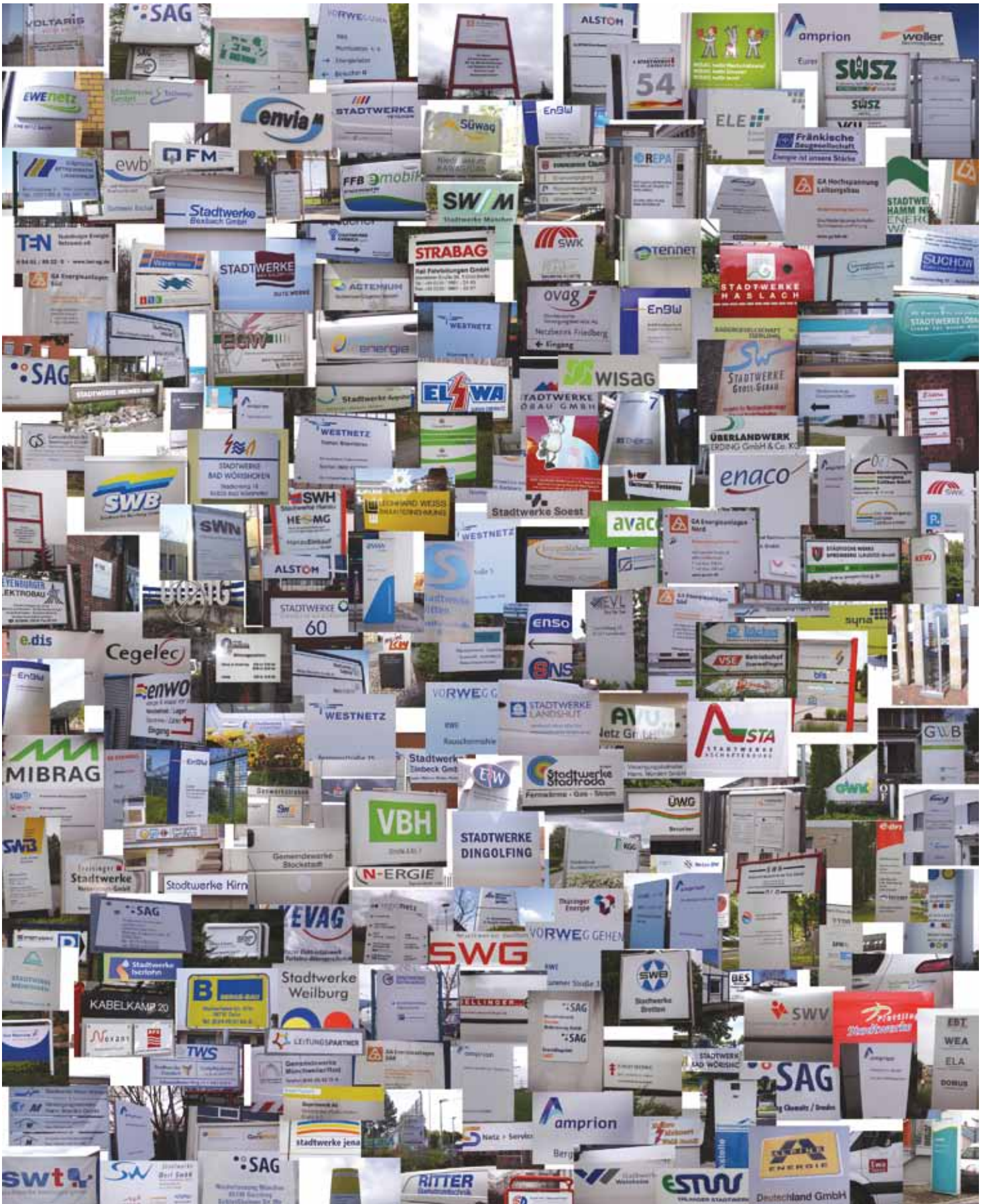
Reversible ratchet

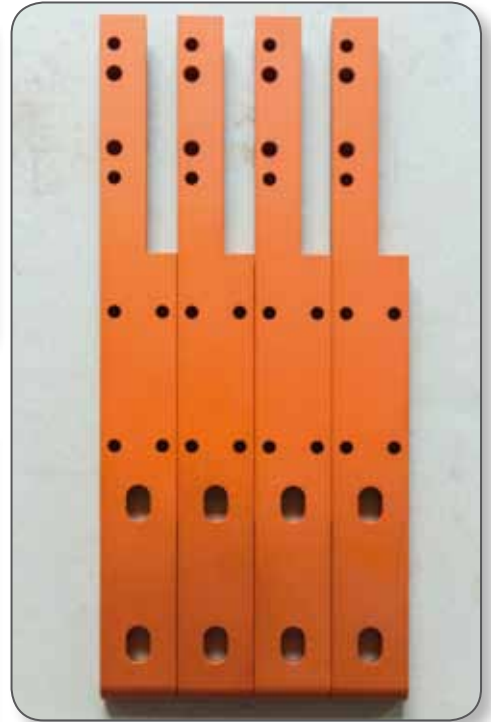


Quick change feature via button, chrome plated,
Right - / reverse, each tested with 10,000 volts,
2-layer safety diving insulation ACC according EN
60900, printed with approval mark according to
your datas

REFERENCES

We would like thank to all customers.
Here is a small excerpt of our references.





www.ipr-tools.de



ipr GmbH

Austr. 101
96465 Neustadt b. Coburg
DE

Phone: +49 9568 89690 0
Fax: +49 9568 89690 1
Mail: international@ipr-tools.de
Internet: www.ipr-tools.de
Facebook: ipr Werkzeuge GmbH

Business Manager
Erika Winterfeld

Trade register Coburg
HRB 5228

Tax number
171/111/05758
UST-ID
DE285703035

Bank
vr-bank Südthüringen
sort code 840 948 14
account number 550 44 21973
BIC GENODEF1SHL
IBAN DE43840948145504421973

innovation product revolution



Registered trademarks of ipr GmbH